



www.Source1Parts.com

# DOWNFLOW/HORIZONTAL GAS FURNACES - 90%

HVAC SERVICE PARTS

Supersedes: 035-17490-002 Rev. B (0703)

035-17490-002 Rev. C (0204)

1 of 8

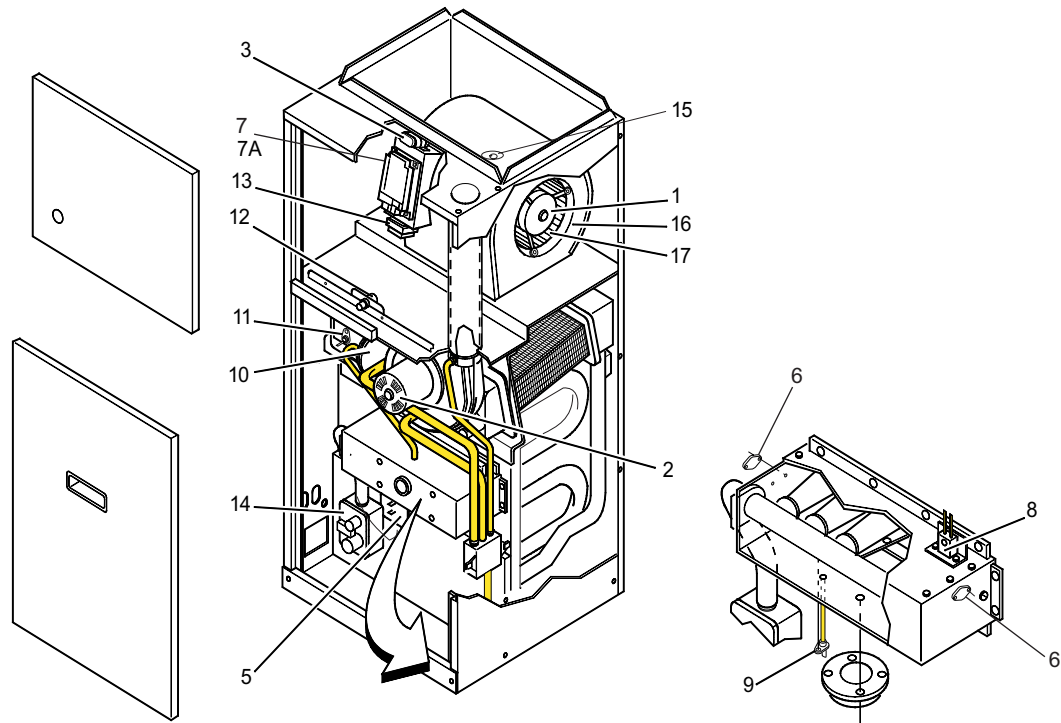


Figure 1: DOWNFLOW/HORIZONTAL NATURAL GAS FURNACES (90%)

FIG	ITEM	DESCRIPTION	P3DHA10N03701D	P3DHB12N05501D	P3DHB12N07501D
			G9T04010DHA13D	G9T06012DHB13D	G9T08012DHB13D
			FG9A04010DH11D	FG9B06012DH11D	FG9B08012DH11D
			(2 BURNER)	(3 BURNER)	(4 BURNER)
<b>MOTOR</b>					
1	1	MOTOR, DIRECT DRIVE BLOWER	024-31969-000	024-23271-000	024-23271-000
1	2	MOTOR, VENTOR ASS'Y	373-20717-001	373-20717-001	373-20717-001
<b>ELECTRICAL</b>					
1	3	CAPACITOR (7.5MFD/370V)	024-20045-000	024-20045-000	024-20045-000
	4				
1	5	CONTROL, HIGH LIMIT	025-29041-001	025-29041-004	025-29041-005
1	6	CONTROL, FLAME ROLL OUT (2 Req'd)	025-27792-001	025-27792-001	025-27792-001
1	7	CONTROL, FURNACE	031-01267-001	031-01267-001	031-01267-001
1	7A	FUSE	025-32746-026	025-32746-026	025-32746-026
1	8	IGNITER	025-32625-000	025-32625-000	025-32625-000
1	9	SENSOR, FLAME	025-30788-000	025-30788-000	025-30788-000
1	10	SWITCH, AIR PRESSURE [1LP]	024-27639-001	024-27637-001	024-27637-001
1	11	SWITCH, AIR PRESSURE [2LP]	024-27631-001	024-27632-001	024-27632-001
1	12	SWITCH, DOOR	024-31943-000	024-31943-000	024-31943-000
1	13	TRANSFORMER	025-30889-000	025-30889-000	025-30889-000
1	14	VALVE, GAS	025-37426-000	025-37426-000	025-37426-000
1	15	CONTROL, LIMIT (Blower)	025-27747-009	025-27747-009	025-27747-009
<b>AIR MOVING</b>					
1	16	HOUSING, BLOWER	373-18255-001	373-18256-001	373-18256-001
1	17	WHEEL, BLOWER	026-34004-000	026-19654-009	026-19654-009

NOTE: \*Not Shown

New replacement parts shown in **bold** face type at the first printing of parts list dated 2/04.

Major components and suggested stocking items are shown with shaded item number.

"<" Across from row indicates a change in that row.

--- Not applicable to specified model.

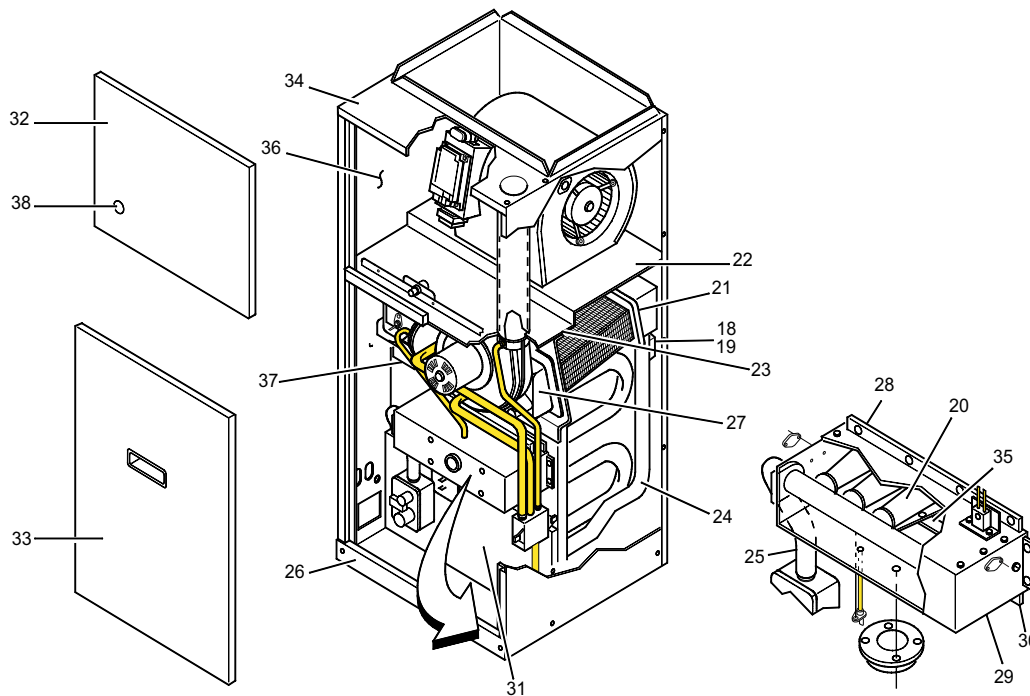


Figure 2: DOWNFLOW/HORIZONTAL NATURAL GAS FURNACES (90%)

FIG	ITEM	DESCRIPTION	P3DHA10N03701D	P3DHB12N05501D	P3DHB12N07501D
			G9T04010DHA13D	G9T06012DHB13D	G9T08012DHB13D
			FG9A04010DH11D	FG9B06012DH11D	FG9B08012DH11D
			(2 BURNER)	(3 BURNER)	(4 BURNER)
<b>FABRICATED PARTS</b>					
2	18	BAFFLE, AIR (LH Recoup.Coil)	073-17989-002	073-17989-002	073-17989-002
2	19	BAFFLE, AIR (RH Recoup.Coil)	073-17989-001	073-17989-001	073-17989-001
2	20	BURNER, MAIN GAS	029-20482-000	029-20482-000	029-20482-000
2	21	COIL, SECONDARY HEAT EXCHANGER	373-17985-002	373-17985-003	373-17985-004
2	22	DECK, BLOWER (Rear)	073-22412-000	073-22413-000	073-22413-000
2	23	DECK, FRONT	073-22408-000	073-22409-000	073-22409-000
2	24	HEAT EXCHANGER ASS'Y (Primary)	373-19852-102	373-19852-103	373-19852-104
2	25	MANIFOLD, GAS	029-22130-002	029-22130-003	029-22130-004
2	26	PANEL, BASE	073-17988-001	073-17988-005	073-17988-005
2	27	PAN, CONDENSATE	028-13322-000	028-13323-000	028-13324-000
2	28	PANEL, BURNER BOX (Bottom)	073-20829-000	073-20821-000	073-20822-000
2	29	PANEL, BURNER BOX (Front)	373-22155-001	373-22155-002	373-22155-003
2	30	WRAPPER, BURNER BOX	073-20721-000	073-20722-000	073-20723-000
2	31	COVER, HEAT EXCHANGER	073-17614-000	073-17615-000	073-17616-000
2	32	PANEL, FRONT (Blower)	073-17987-001	073-17987-002	073-17987-002
2	33	PANEL, FRONT (Burner)	073-17975-001	073-17975-002	073-17975-002
2	34	PANEL, TOP	073-17986-001	073-17986-002	073-17986-002
2	35	SUPPORT, BURNER	073-17454-000	073-17455-000	073-17456-000
2	36	WRAPPER, CABINET (Insulated) <b>P3D</b>	373-19860-401	373-19860-402	373-19860-402
		WRAPPER, CABINET <b>G9T, FG9</b>	373-22417-001	373-22417-002	373-22417-002
2	37	PANEL, VESTIBULE (Lower)	073-17970-000	073-17971-000	073-17971-000
2	38	PLUG, WINDOW, CLEAR - .875"	025-30899-000	025-30899-000	025-30899-000

NOTE: \*Not Shown

New replacement parts shown in **bold** face type at the first printing of parts list dated 2/04.

Major components and suggested stocking items are shown with shaded item number.

"<" Across from row indicates a change in that row.

--- Not applicable to specified model.



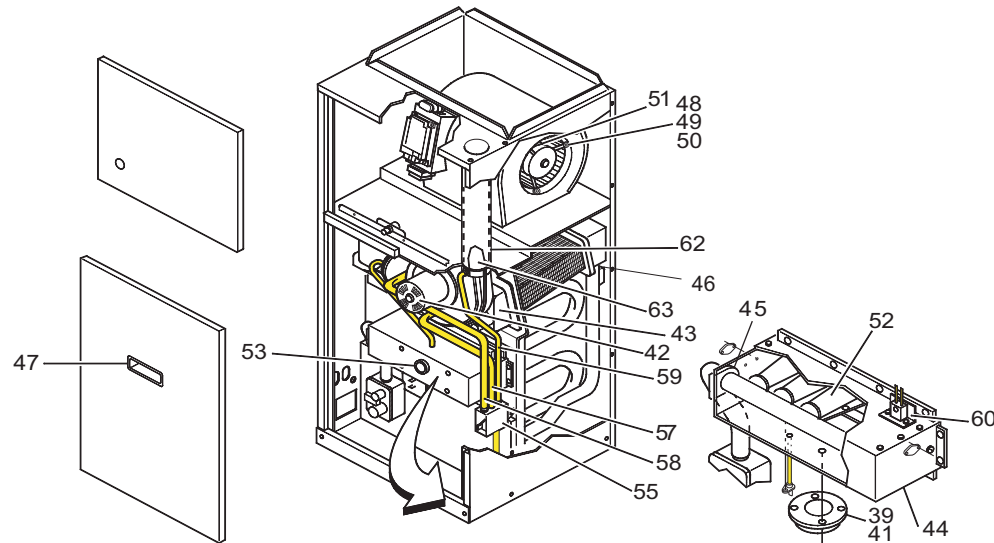


Figure 3: DOWNFLOW/HORIZONTAL NATURAL GAS FURNACES (90%)<

FIG	ITEM	DESCRIPTION	P3DHA10N03701D	P3DHB12N05501D	P3DHB12N07501D
			G9T04010DHA13D	G9T06012DHB13D	G9T08012DHB13D
			FG9A04010DH11D	FG9B06012DH11D	FG9B08012DH11D
			(2-BURNER)	(3 BURNER)	(4 BURNER)
<b>MISCELLANEOUS</b>					
3	39	COLLAR, AIR INTAKE (Burner Box)	028-11289-000	028-11289-000	028-11289-000
*	40	FILTER, AIR (2 Req'd) <b>P3D, G9T</b>	026-23050-004	026-23050-004	026-23050-004
		FILTER SIZE	(1 X 14 X 20)	(1 X 14 X 20)	(1 X 14 X 20)
3	41	GASKET, AIR INTAKE	028-12460-001	028-12460-001	028-12460-001
3	42	GASKET, COMBUSTION BLOWER	028-12498-000	028-12498-000	028-12498-000
3	43	GASKET, CONDENSATE PAN	028-12458-001	028-12458-002	028-12458-002
3	44	GASKET, BURN BOX TO VEST PANEL	028-12459-001	028-12459-002	028-12459-003
3	45	GROMMET, MANIFOLD SEAL	028-12465-000	028-12465-000	028-12465-000
3	46	GASKET, RETURN TUBE (1 Req'd)	028-12461-000	028-12461-000	028-12461-000
3	47	HANDLE, DOOR	029-22113-000	029-22113-000	029-22113-000
3	48	ISOLATOR, TUBE (3 Req'd)	---	028-09412-001	028-09412-001
3	49	ISOLATOR, WASHER (3 Req'd)	---	028-09412-002	028-09412-002
3	50	ISOLATOR, SLEEVE (3 Req'd)	---	028-09412-003	028-09412-003
3	51	MOUNT, MOTOR	---	026-31459-000	026-31459-000
3	52	ORIFICE, BURNER (Natural #45)	029-21182-045	029-21182-045	029-21182-045
3	53	PLUG, WINDOW,CLEAR - 1.5"	025-37005-000	025-37005-000	025-37005-000
*	54	BRACKET, FILTER <b>P3D, G9T</b>	373-18262-001	373-18262-001	373-18262-001
3	55	TRAP, CONDENSATE	028-14723-000	028-14723-000	028-14723-000
*	56	WIRING DIAGRAM	035-16457-001	035-16457-001	035-16457-001
3	57	HOSE, INDUCER DRAIN	028-13307-000	028-13307-000	028-13307-000
3	58	HOSE, RAIN GUTTER DRAIN	028-13308-000	028-13308-000	028-13308-000
3	59	HOSE, CONDENSATE DRAIN	028-13306-000	028-13306-000	028-13306-000
3	60	BRACKET, IGNITOR	073-17403-000	073-17403-000	073-17403-000
*	61	HOSE, CONDENSATE TRAP	028-13309-004	028-13309-004	028-13309-004
3	62	PIPE VENT (Outer)	026-35453-004	026-35453-004	026-35453-004
3	63	PIPE EXHAUST VENT (Inner)	028-13298-000	028-13298-000	028-13298-000
*	64	DRAIN, INDUCER	028-13339-001	028-13339-001	028-13339-001
*	65	DRAIN, INDUCER	028-13339-002	028-13339-002	028-13339-002
*	66	DRAIN, RAIN GUTTER	028-13340-000	028-13340-000	028-13340-000
*	67	DRAIN, CONDENSATE PAN	028-13341-000	028-13341-000	028-13341-000

NOTE: \*Not Shown

New replacement parts shown in **bold** face type at the first printing of parts list dated 2/04.

Major components and suggested stocking items are shown with shaded item number.

"<" Across from row indicates a change in that row.

--- Not applicable to specified model.

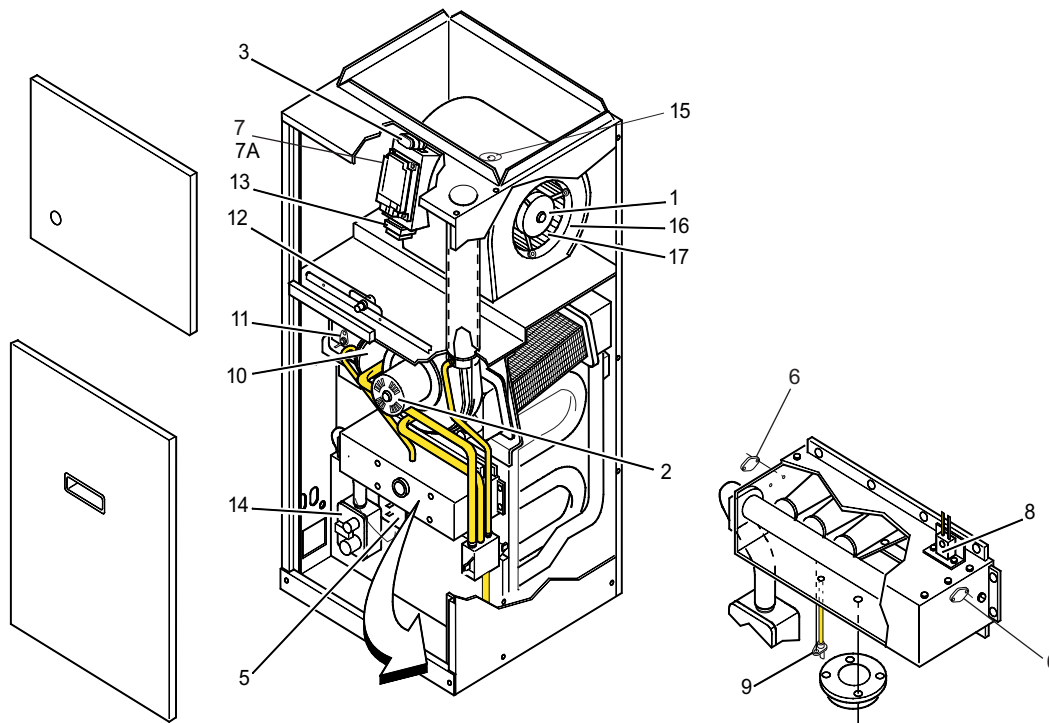


Figure 1: DOWNFLOW/HORIZONTAL NATURAL GAS FURNACES (90%)

FIG	ITEM	DESCRIPTION	P3DHC16N07501D	P3DHC20N09501D	P3DHD20N11201D
			G9T08016DHC13D	G9T10020DHC13D	G9T12020DHD13D
			FG9C08016DH11D	FG9C10020DH11D	FG9D12020DH11D
			(4 BURNER)	(5 BURNER)	(6 BURNER)
<b>MOTOR</b>					
1	1	MOTOR, DIRECT DRIVE BLOWER	024-26002-000	024-23238-001	024-23238-001
1	2	MOTOR, VENTOR ASS'Y	373-20717-001	373-20717-001	373-20717-001
<b>ELECTRICAL</b>					
1	3	CAPACITOR (10MFD/370V)	024-20046-000	---	---
		CAPACITOR (15MFD/370V)	---	024-20446-000	024-20446-000
	4				
1	5	CONTROL, HIGH LIMIT	025-38412-000	025-29041-004	025-29041-005
1	6	CONTROL, FLAME ROLL OUT (2 Req'd)	025-27792-001	025-27792-001	025-27792-001
1	7	CONTROL, FURNACE	031-01267-001	031-01267-001	031-01267-001
1	7A	FUSE	025-32746-026	025-32746-026	025-32746-026
1	8	IGNITER	025-32625-000	025-32625-000	025-32625-000
1	9	SENSOR, FLAME	025-30788-000	025-30788-000	025-30788-000
1	10	SWITCH, AIR PRESSURE [1LP]	024-27638-001	024-27634-001	024-27637-001
1	11	SWITCH, AIR PRESSURE [2LP]	024-27632-001	024-27631-001	024-27632-001
1	12	SWITCH, DOOR	024-31943-000	024-31943-000	024-31943-000
1	13	TRANSFORMER	025-30889-000	025-30889-000	025-30889-000
1	14	VALVE, GAS	025-37426-000	025-37426-000	025-37426-000
1	15	CONTROL, LIMIT (Blower)	025-27747-009	025-27747-009	025-27747-009
<b>AIR MOVING</b>					
1	16	HOUSING, BLOWER	373-18256-001	373-18256-002	373-18256-002
1	17	WHEEL, BLOWER	026-19654-009	026-19654-014	026-19654-014

NOTE: \*Not Shown

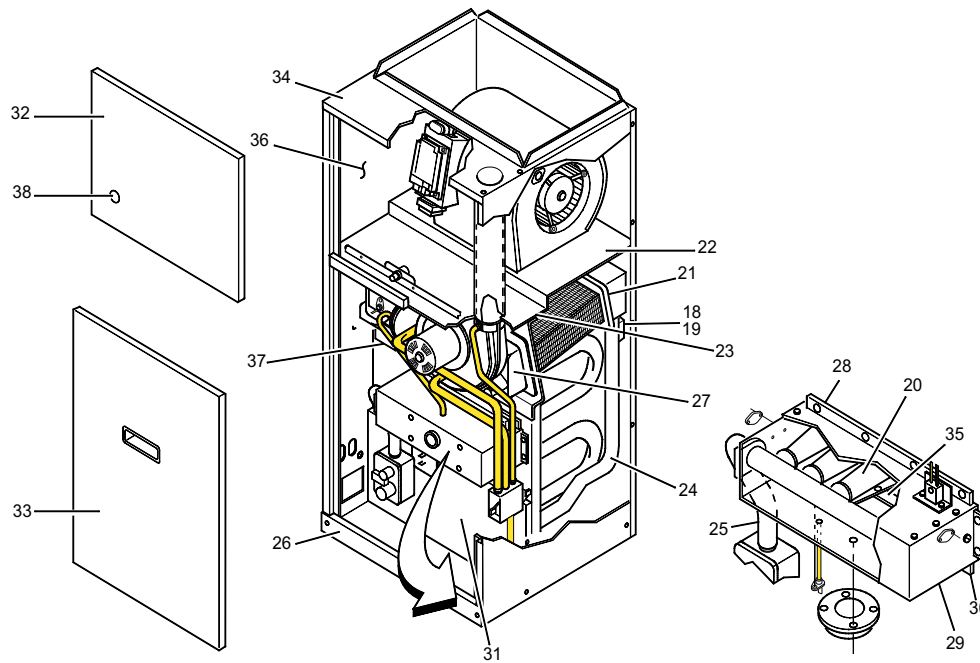
New replacement parts shown in **bold** face type at the first printing of parts list dated 2/04.

Major components and suggested stocking items are shown with shaded item number.

"<" Across from row indicates a change in that row.

--- Not applicable to specified model.





**Figure 2: DOWNFLOW/HORIZONTAL NATURAL GAS FURNACES (90%)**

FIG	ITEM	DESCRIPTION	P3DHC16N07501D	P3DHC20N09501D	P3DHD20N11201D
			G9T08016DHC13D	G9T10020DHC13D	G9T12020DHD13D
			FG9C08016DH11D	FG9C10020DH11D	FG9D12020DH11D
			(4 BURNER)	(5 BURNER)	(6 BURNER)
<b>FABRICATED PARTS</b>					
2	18	BAFFLE, AIR (LH Recoup.Coil)	073-17989-002	073-17989-002	073-17989-002
2	19	BAFFLE, AIR (RH Recoup. Coil)	073-17989-001	073-17989-001	073-17989-001
2	20	BURNER, MAIN GAS	029-20482-000	029-20482-000	029-20482-000
2	21	COIL, SECONDARY HEAT EXCHANGER	373-17985-014	373-17985-005	373-17985-006
2	22	DECK, BLOWER (Rear)	073-22416-000	073-22414-000	073-22415-000
2	23	DECK, FRONT	073-22410-000	073-22410-000	073-22411-000
2	24	HEAT EXCHANGER ASS'Y (Primary)	373-19852-124	373-19852-105	373-19852-106
2	25	MANIFOLD, GAS	029-22130-004	029-22130-005	029-22130-006
2	26	PANEL, BASE	073-17988-006	073-17988-006	073-17988-004
2	27	PAN, CONDENSATE	028-13328-000	028-13325-000	028-13326-000
2	28	PANEL, BURNER BOX (Bottom)	073-20822-000	073-20823-000	073-20824-000
2	29	PANEL, BURNER BOX (Front)	373-22155-003	373-22155-004	373-22155-005
2	30	WRAPPER, BURNER BOX	073-20723-000	073-20724-000	073-20725-000
2	31	COVER, HEAT EXCHANGER	073-17616-000	073-17617-000	073-17618-000
2	32	PANEL, FRONT (Blower)	073-17987-003	073-17987-003	073-17987-004
2	33	PANEL, FRONT (Burner)	073-17975-003	073-17975-003	073-17975-004
2	34	PANEL, TOP	073-17986-003	073-17986-003	073-17986-004
2	35	SUPPORT, BURNER	073-17456-000	073-17457-000	073-17458-000
2	36	WRAPPER, CABINET (Insulated) <b>P3D</b>	<b>373-19860-405</b>	<b>373-19860-405</b>	373-19860-004
		WRAPPER, CABINET <b>G9T,FG9</b>	373-19851-113	373-22417-003	373-22417-004
2	37	PANEL, VESTIBULE (Lower)	073-17972-000	073-17972-000	073-17973-000
2	38	PLUG, WINDOW,CLEAR - .875"	025-30899-000	025-30899-000	025-30899-000

NOTE: \*Not Shown

New replacement parts shown in **bold** face type at the first printing of parts list dated 2/04.

Major components and suggested stocking items are shown with shaded item number.

"<" Across from row indicates a change in that row.

--- Not applicable to specified model.



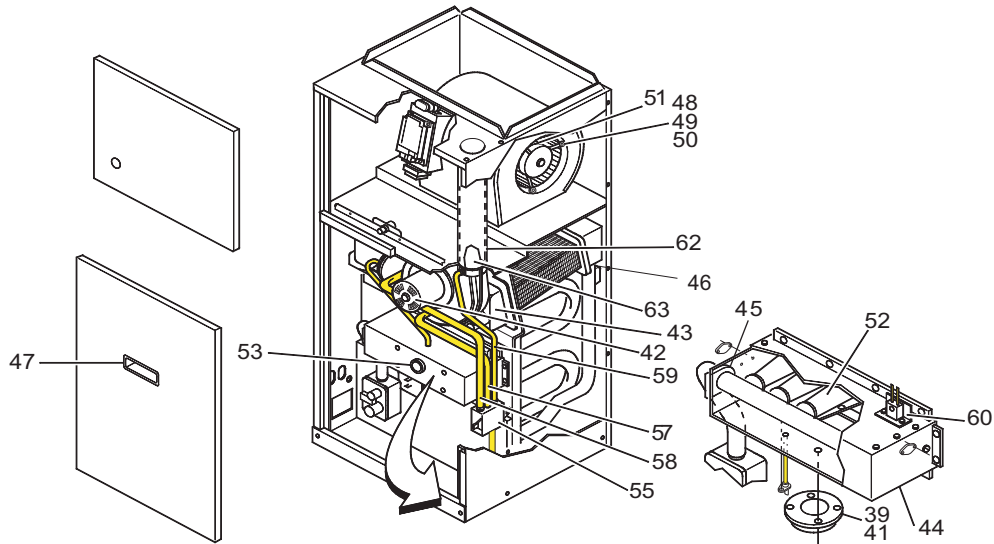


Figure 3: DOWNFLOW/HORIZONTAL NATURAL GAS FURNACES (90%)<

FIG	ITEM	DESCRIPTION	P3DHC16N07051D	P3DHC20N09501D	P3DHD20N11201D
			G9T08016DHC13D	G9T10020DHC13D	G9T12020DHD13D
			FG9C08016DH11D	FG9C10020DH11D	FG9D12020DH11D
			(4 BURNER)	(5 BURNER)	(6 BURNER)
MISCELLANEOUS					
3	39	COLLAR, AIR INTAKE (Burner Box)	028-11289-000	028-11289-000	028-11290-000
*	40	FILTER, AIR (2 Req'd) <b>P3D, G9T</b>	026-23050-004	026-23050-004	026-23050-004
		FILTER SIZE	(1 X 14 X 20)	(1 X 14 X 20)	(1 X 14 X 20)
3	41	GASKET, AIR INTAKE	028-12460-001	028-12460-001	028-12460-002
3	42	GASKET, COMBUSTION BLOWER	028-12498-000	028-12498-000	028-12498-000
3	43	GASKET, CONDENSATE PAN	028-12458-003	028-12458-003	028-12458-004
3	44	GASKET, BURN BOX TO VEST PANEL	028-12459-003	028-12459-004	028-12459-005
3	45	GROMMET, MANIFOLD SEAL	028-12465-000	028-12465-000	028-12465-000
3	46	GASKET, RETURN TUBE (1 Req'd)	028-12461-000	---	---
		GASKET, RETURN TUBE (1 Req'd)	---	028-12461-000	028-12461-000
3	47	HANDLE, DOOR	029-22113-000	029-22113-000	029-22113-000
3	48	ISOLATOR, TUBE (3 Req'd)	028-09412-001	028-09412-001	028-09412-001
3	49	ISOLATOR, WASHER (3 Req'd)	028-09412-002	028-09412-002	028-09412-002
3	50	ISOLATOR, SLEEVE (3 Req'd)	028-09412-003	028-09412-003	028-09412-003
3	51	MOUNT, MOTOR	026-31459-000	026-31459-000	026-31459-000
3	52	ORIFICE, BURNER (Natural #45)	029-21182-045	029-21182-045	029-21182-045
3	53	PLUG, WINDOW, CLEAR - 1.5"	025-37005-000	025-37005-000	025-37005-000
*	54	BRACKET, FILTER <b>P3D, G9T</b>	373-18262-001	373-18262-001	373-18262-001
3	55	TRAP, CONDENSATE	028-14723-000	028-17423-000	028-17423-000
*	56	WIRING DIAGRAM	035-16457-001	035-16457-001	035-16457-001
3	57	HOSE, INDUCER DRAIN	028-13307-000	028-13307-000	028-13307-000
3	58	HOSE, RAIN GUTTER DRAIN	028-13308-000	028-13308-000	028-13308-000
3	59	HOSE, CONDENSATE DRAIN	028-13306-000	028-13306-000	028-13306-000
3	60	BRACKET, IGNITOR	073-17403-000	073-17403-000	073-17403-000
*	61	HOSE, CONDENSATE TRAP	028-13309-004	028-13309-004	028-13309-004
3	62	PIPE VENT (Outer)	026-35453-004	026-35453-004	026-35453-004
3	63	PIPE EXHAUST VENT (Inner)	028-13298-000	028-13298-000	028-13298-000
*	64	DRAIN, INDUCER	028-13339-001	028-13339-001	028-13339-001
*	65	DRAIN, INDUCER	028-13339-002	028-13339-002	028-13339-002
*	66	DRAIN, RAIN GUTTER	028-13340-000	028-13340-000	028-13340-000
*	67	DRAIN, CONDENSATE PAN	028-13341-000	028-13341-000	028-13341-000

NOTE: \*Not Shown  
 New replacement parts shown in **bold** face type at the first printing of parts list dated 2/04.  
 Major components and suggested stocking items are shown with shaded item number.  
 "<" Across from row indicates a change in that row.  
 --- Not applicable to specified model.



<b>FIELD INSTALLED ACCESSORIES - NON ELECTRICAL</b>		
<b>MODEL NO.</b>	<b>DESCRIPTION</b>	<b>USED WITH</b>
1NP0347	PROPANE (LP) CONVERSION KIT	ALL MODELS
1CT0302	CONCENTRIC INTAKE/VENT 2"	40, 60, 80, 100 MBH
1CT0303	CONCENTRIC INTAKE/VENT 3"	120 MBH
1PS0306	HIGH ALTITUDE PRESSURE SWITCH KIT (Does Not Include Orifices)	FOR APPLICATION INFORMATION SEE FORM 650.75-N2.1V
1PS0307		
1PS0308		
1PS0309		
1PS0310		
ICB0314	COMBUSTIBLE FLOOR BASE FOR DOWNFLOW UNITS	14-1/2" CABINETS
1CB0317		17-1/2" CABINETS
1CB0321		21" CABINETS
1CB0324		24-1/2" CABINETS
1BR0314	EXTERNAL FILTER RACK WITH HIGH VELOCITY FILTER FOR HORIZONTAL APPLICATION	14-1/2" CABINETS
1BR0317		17-1/2" CABINETS
1BR0321		21" CABINETS
1BR0324		24-1/2" CABINETS
1NK0301	CONDENSATE NEUTRALIZER KIT	ALL MODELS

<b>FIELD INSTALLED ACCESSORIES - ELECTRICAL</b>		
<b>MODEL NO.</b>	<b>DESCRIPTION</b>	<b>USED WITH</b>
2TH07700124	THERMOSTAT-One-stage heat/cool. Manual changeover, integral subbase. System switch: Cool-Off-Heat. Fan switch: Auto-On.	ALL P3D MODELS
2TH13700424	THERMOSTAT-One-stage heat. Deluxe 24V with heat only subbase, does not include fan switch. NOTE: For one-stage cool or one-stage heat/cool, must be used with subbase 2TB17700424.	
2TB17700424	SUBBASE (24V) -One-stage heat/cool. Manual changeover. System switch: Cool-Off-Heat. Fan switch: Auto-On.	ALL MODELS
2ET07700224	THERMOSTAT- Heating/Cooling. Programmable electric, one-stage heat/cool. Manual changeover with subbase. System switch: Heat-Off-Cool. Fan switch: Auto-On.	ALL P3D MODELS
2TC03700124	TWINNING CONTROL	ALL MODELS
6TH13700524	THERMOSTAT- One-stage Heat. Deluxe 24V with heat only subbase, does not include fan switch. NOTE: For one-stage cool or one-stage heat/cool, must be used with subbase 2TB17700424.	ALL G9T, FG9 MODELS
6ET03700324	THERMOSTAT- Hardwired, 1 Heat / 1Cool. Manual changeover. System Switch: Cool-Off-Heat. Fan Switch: Auto-On	
6ET03701224	THERMOSTAT- Power Stealing., 1 Heat / 1Cool. Manual changeover. System Switch: Cool-Off-Heat. Fan Switch: Auto-On	
6ET03700124	THERMOSTAT- Hardwired, 1 Heat / 1Cool. Programmable, Auto changeover. System Switch: Cool-Off-Heat. Fan Switch: Auto-On	
6ET03791024	THERMOSTAT- Power Stealing. 1 Heat / 1Cool. Programmable, Auto changeover. System Switch: Cool-Off-Heat. Fan Switch: Auto-On	

**TO ORDER AUTHORIZED FACTORY REPLACEMENT PARTS** - Contact your Source1 HVAC Parts Distributor or visit our website at **www.Source1Parts.com** for a Distributor and Dealer listing.

Subject to change without notice. Printed in U.S.A.  
Copyright © by York International Corp. 2004. All rights reserved.

035-17490-002 Rev. C (0204)  
Supersedes: 035-17490-002 Rev. B (0703)

---

<b>Unitary Products Group</b>	<b>5005 York Drive</b>	<b>Norman OK 73069</b>
---------------------------------------	--------------------------------	--------------------------------